



Dear Ladies and Gentlemen,

Arnold is supplier of horizontal glass working lathes, especially developed for a very **precise stretching of preforms**. These preforms are normally manufactured by using the VAD process, and the continuous processing could be prepared and done with our plant in an optimum way.

For joining the handles and the following actual stretching process of preforms there are hydrogen/oxygen burners used. Prior to the actual stretching process, preforms are scanned by a measuring system and measured data are transferred to the machine control. Thus different stretching programmes or even / until PID controls can be generated.

#### **Flexibility Is Our Advantage**

Machines like this are often tailor-made and adjusted to our customers and their applications. Exchange of information between customers and our development is already done during the developmental stage of each project. More than 60 years' experience in mechanical engineering combined with our customer's know-how, guarantee successful projects.

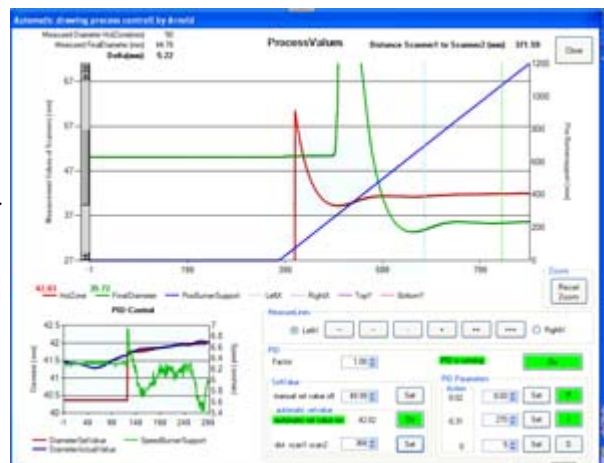


### High Accuracy

- Best accuracy capability during drawing procedure  $\pm 0,1$  mm.
- Combined with a high reproducibility

### Mechanical engineering „State of the Art“

- Precision machine bed with pre-tensioned linear guide rails.
- A measuring system, integrated in the water-cooled housing, can be operated rather closed to the hot area, thus a PID process becomes possible.
- All movable machine assemblies are precisely moving via ball screw.
- AC servo motors combined with planetary gears and toothed drive, grant utmost accuracy of all axes.

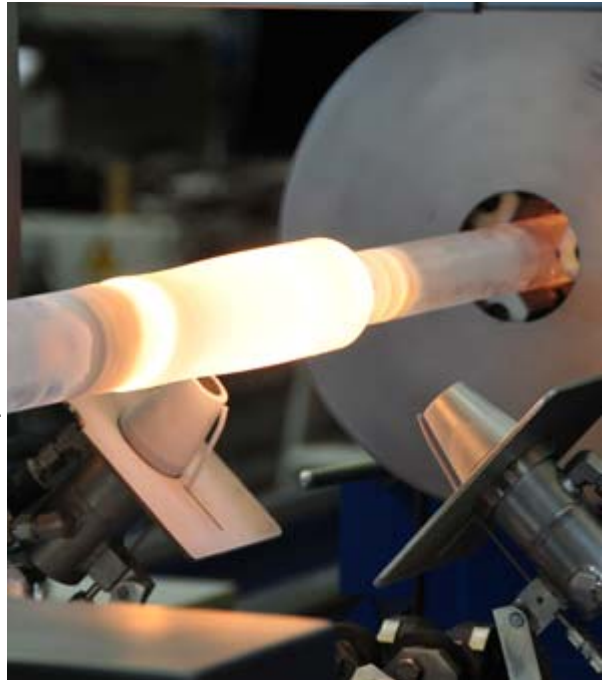


### Latest Burner Technology

- Special burners with very narrow heating zone
- Burner gas control via MFC
- Comfortable burner radial adjustment

### Prevention Of Particles On The Glass:

- Burner gas control completely made of stainless steel.
- Orbital welded tube, inside polished.
- Immediately after use, burners are moved away from the hot glass surface, using a pneumatically operated burner swivelling device. Process combined with a nitrogen flushing thus preventing heating of burner matrix.
- Moreover burners are made of highly heat resistant stainless steel.
- Quartz burners are available as an option.



### High Flexibility:

- Combination ball screw / adjustment possible via handwheel
- Flexible execution by using one or two burners
- Different lengths of machine bed possible
- Further processes possible to be done with this plant: joining works, aliging works, fire polishing.
- Visualization in several languages (Germany, English, Chinese)

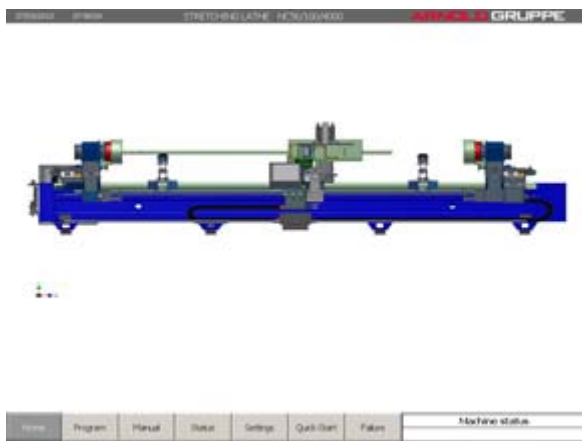
### Short Set-up Times:

- Especially compared with vertical plants.
- By using high quality clamping chucks.
- Simple handling of products

### Safety:

- Covered clamping chucks
- Flame monitoring using UV detectors
- Burner gas control with integrated flashback, ' flame arrestor, safety magnetic valve in the burner gas path etc.
- Leak test via time / pressure diagram

## Machine Control



HMI System, which is adjusted to the corresponding process and the national language, operation via

touch screen, a very good structured visualization, comfortable input option up to Arnold the AEPS+System do meanwhile belong to the standard delivery range at our machinery.

## **AEPSPLUS**

Click [here](#) to learn more about the new ARNOLD machine control or test our **AEPSPLUS** Demoversion.

---

### **Arnold on Facebook and Youtube**

We also appreciate your look at Facebook via Internet or at the latest videos at our Youtube channel.



<http://www.facebook.com/ArnoldGruppe>



<http://www.youtube.com/arnoldgruppe>



**Herbert Arnold GmbH & Co.KG**

Weilstrasse 6

35781 Weilburg, Germany

[www.arnold-gruppe.de](http://www.arnold-gruppe.de)

[info@arnold-gruppe.de](mailto:info@arnold-gruppe.de)

[Impressum/Impress/Copyright](#)

